

ZEUS HYDRATECH LTD
Global Suppliers of Premium Hydraulic Components

Official UK Distributor for Sauer Bibus GmbH

T: +44(0)1172 130042. E: sales@zeushydratech.com. W: zeushydratech.com

BIBUS HYDRAULIK
SUPPORTING YOUR SUCCESS



ICVD[®]
the effective transmission

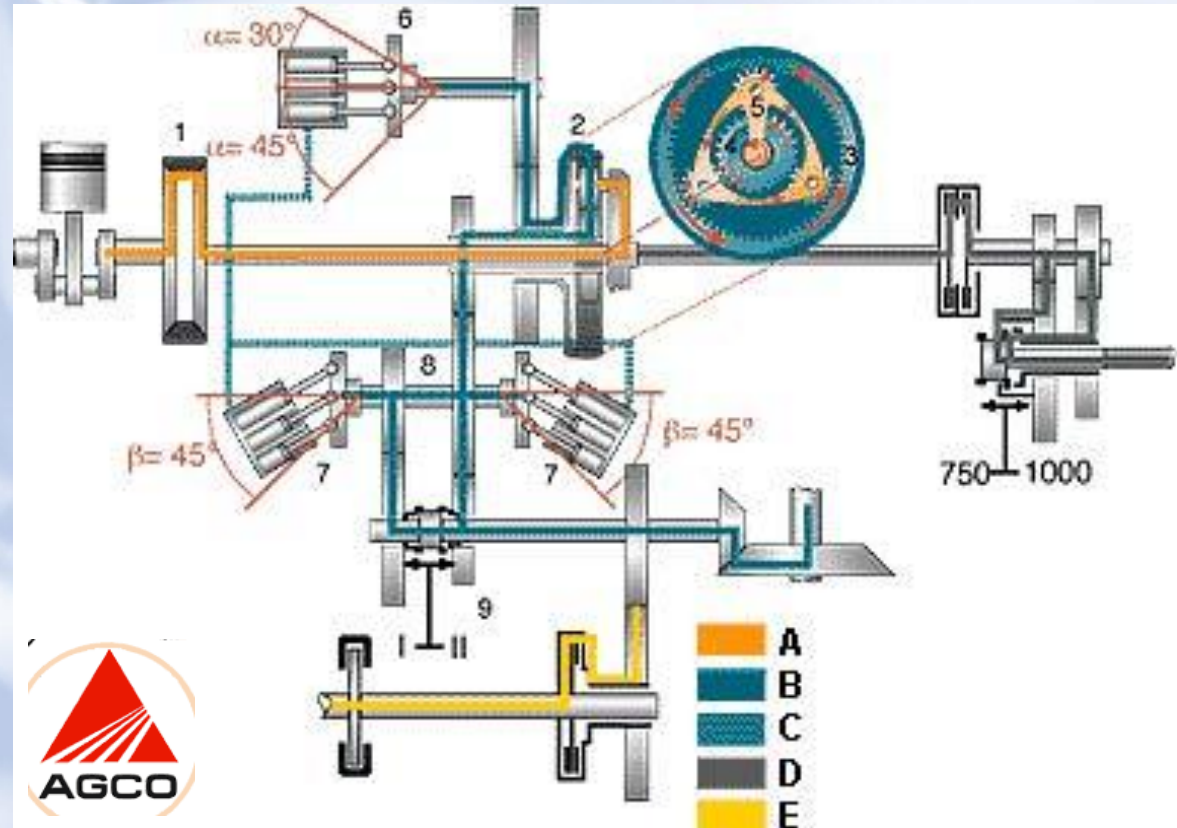




Fendt-Vario-Getriebe

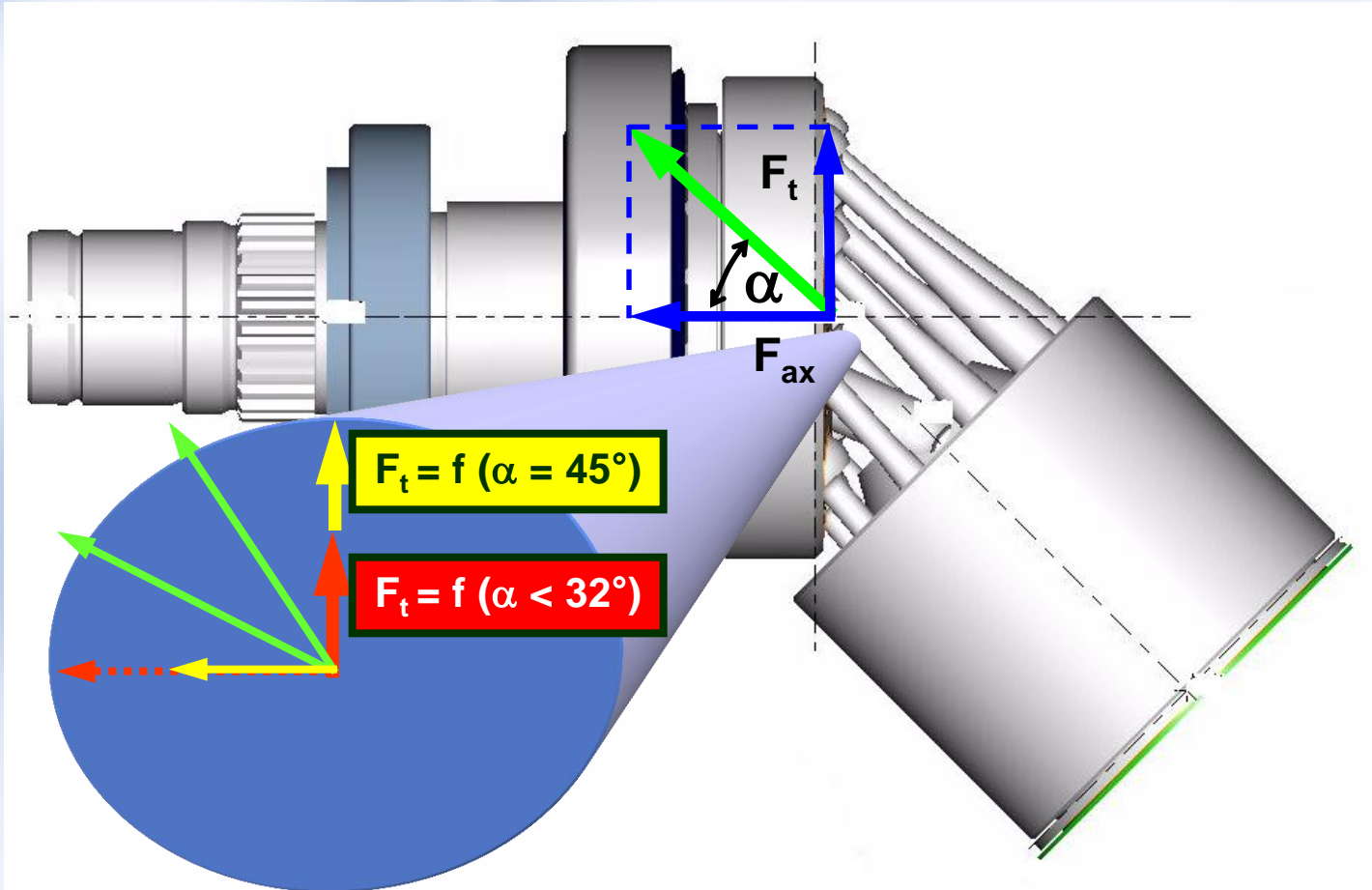
Leistungsverzweigung mit
Sauer-Danfoss-Grosswinkeltriebwerk
45°-Technologie

Seit über 15 Jahren
im Serieneinsatz





ICVD® - Grosswinkeltriebwerk 45°-Technologie



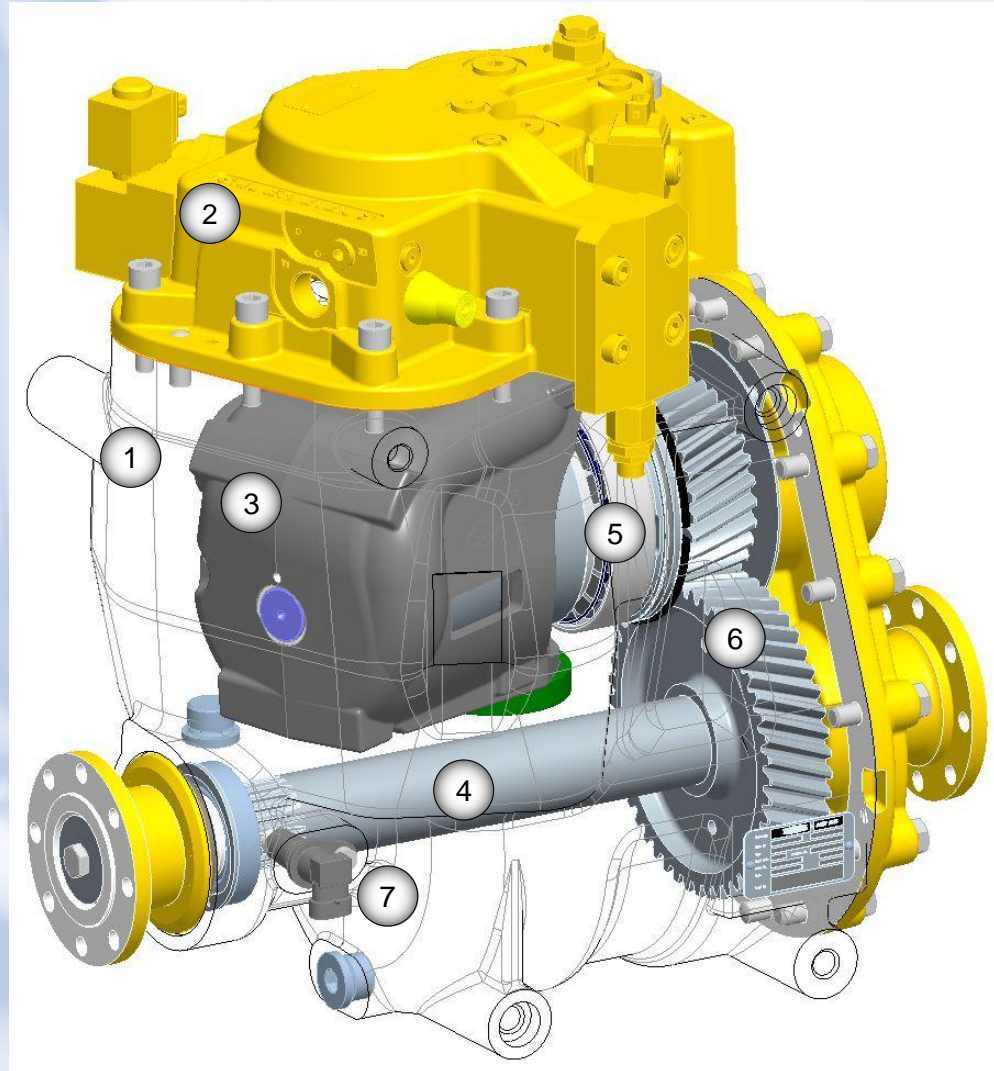
Entwicklungsschwerpunkte:

- Optimierung des mechanischen Wirkungsgrads
- Optimierung des volumetrischen Wirkungsgrads



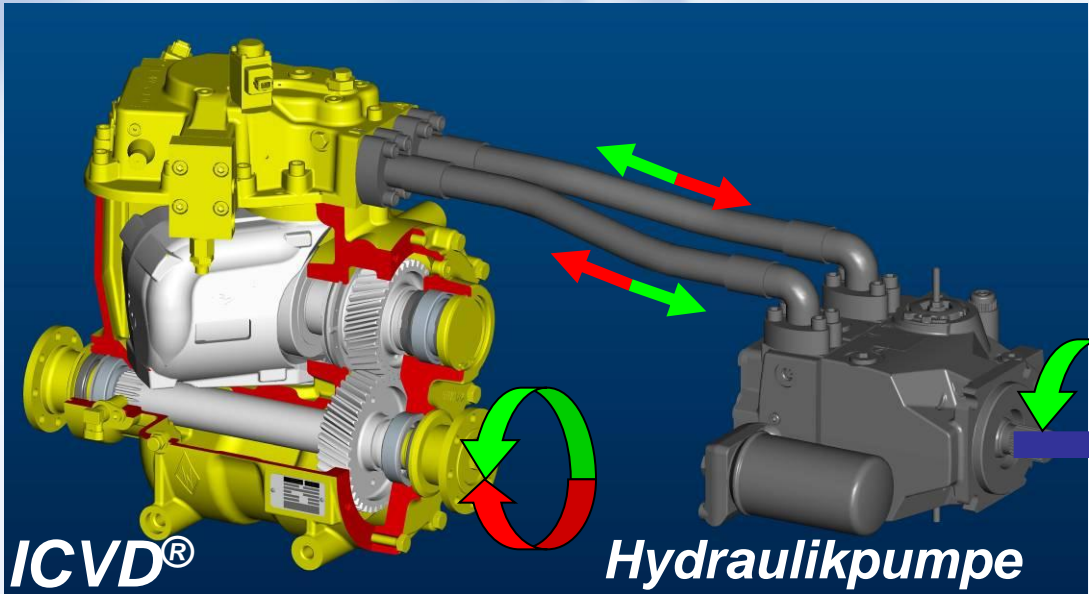
ICVD GT-S1 N 233V Baugruppen

- 1 Gehäuse
- 2 Steuerdeckel
- 3 Schwenkbügel
- 4 Abtriebswelle
- 5 Triebwerk
- 6 Getriebe
- 7 Drehzahlgeber

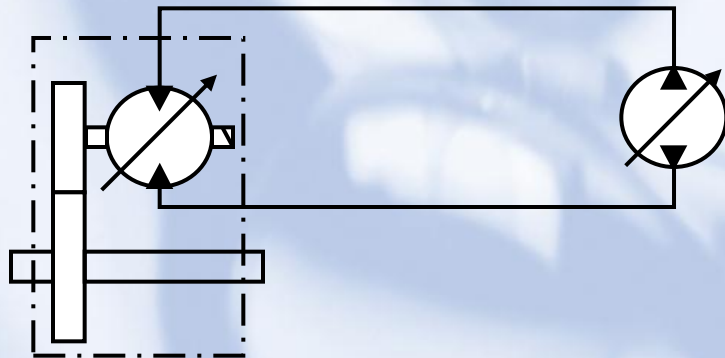




ICVD® - Grosswinkeltriebwerk 45°-Technologie



Dieselmotor





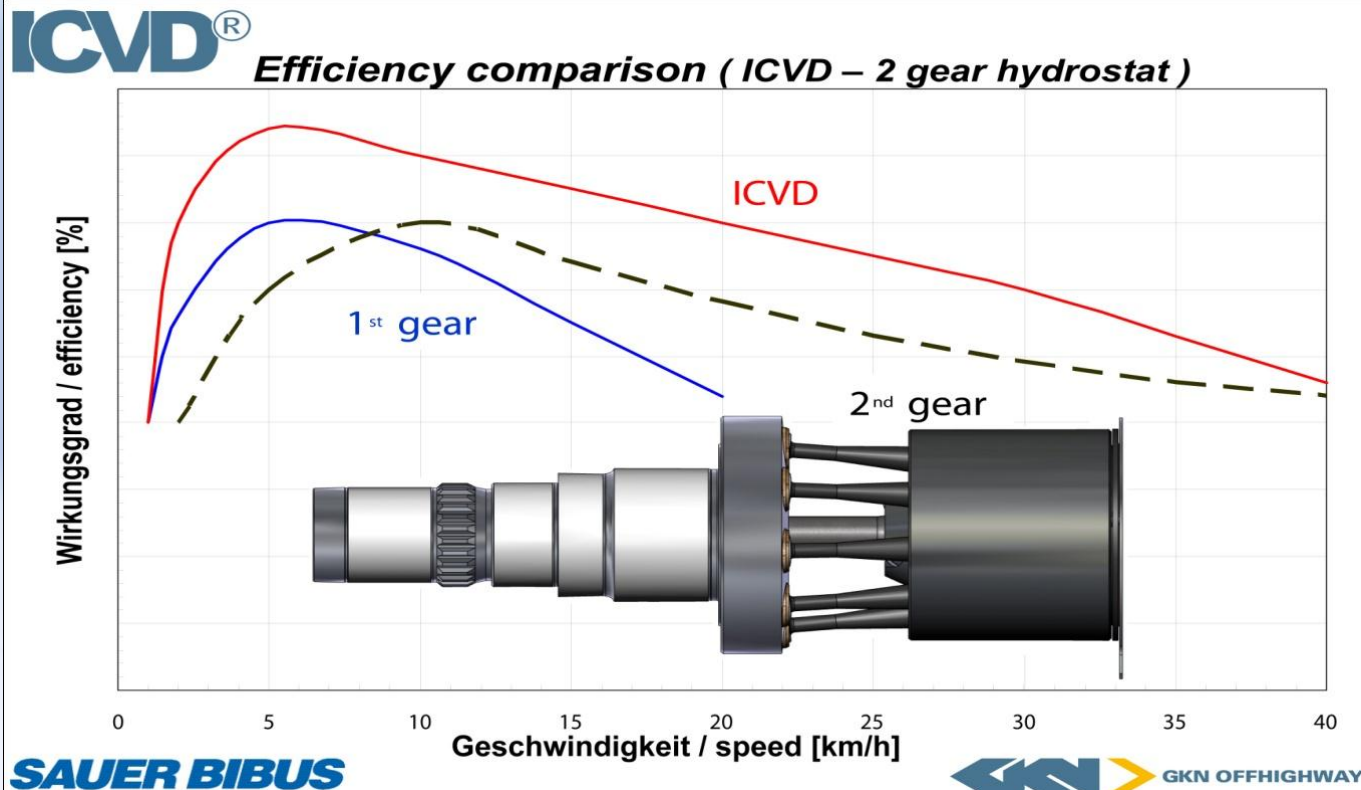
Integrated Continuously Variable Drive

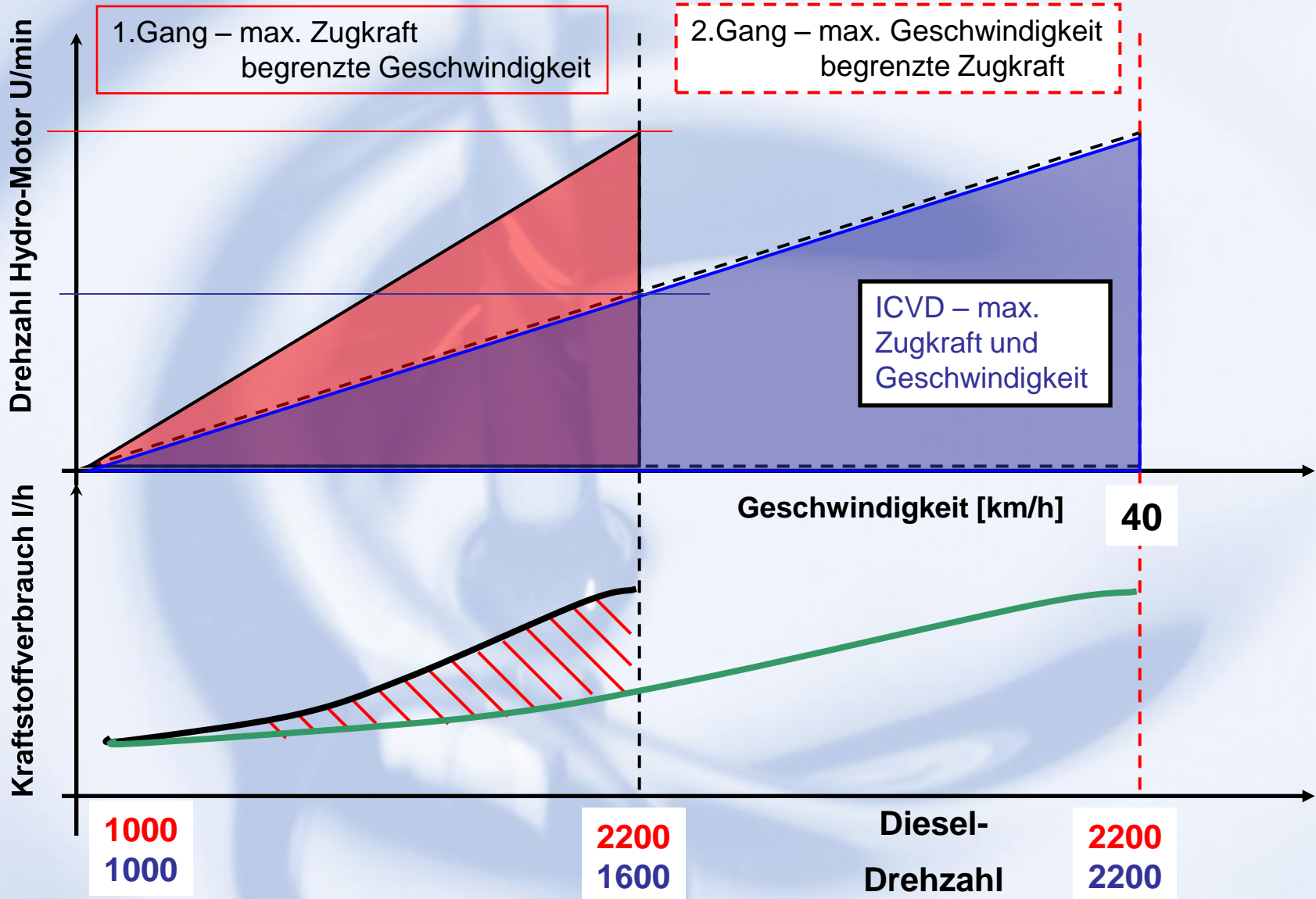


Stufenloses Fahren ohne Zugkraftunterbrechung von 0 – v-max. (bis zu 80 km/h realisiert)



Optimierte Wirkungsgrade durch innovative Technologien



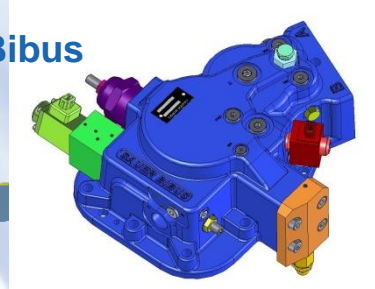




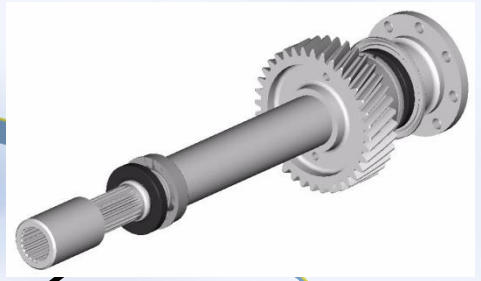
GKN Walterscheid



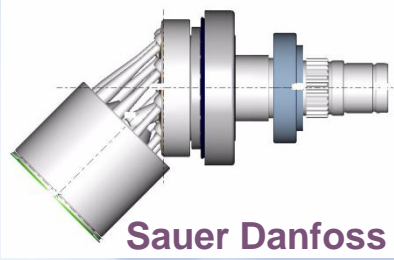
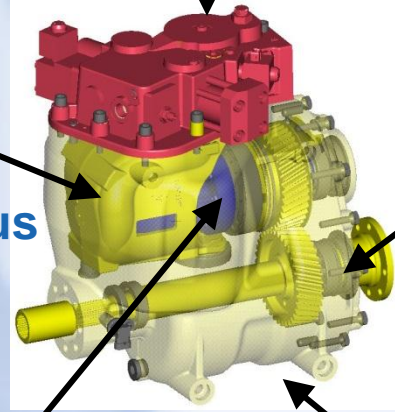
Sauer Bibus



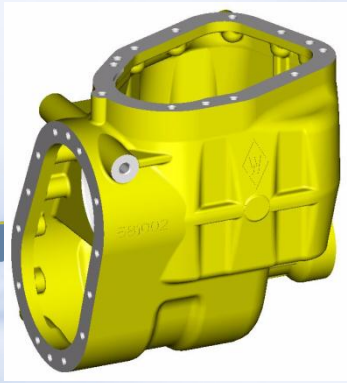
GKN Walterscheid



Sauer Bibus



Sauer Danfoss



GKN Walterscheid



ICVD® MO-S0 N 233V



Max. torque at power unit shaft Md	1,600 Nm
Flange connection, ISO 3019+2	160B4HW
Shaft profile, DIN 5480	W50x2x30x24x8f
Operating pressure – max. (Δp)	480 bar
Installation position	Any
Mass (without fluids) m	Approx. 95 kg
Hydraulic fluid quantity	Approx. 1.5 l



ICVD® GT-S1 N 233V



Transmission ratio i	0.94 - 1.6
Torque at the output shaft M_d	1,280 - 2,560 Nm
Max. drive shaft operating angle ¹⁾	$< 3^\circ$ and Z-bend
Drive shaft flange	DIN ISO 7646 120 x 8 x 10
Operating pressure – max. (Δp)	480 bar
Installation position	Vertical ¹⁾
Mass (without fluids) m	Approx. 140 kg
Transmission oil quantity	Approx. 4 l
Transmission oil grade	SAE 90 API-GL-5
Hydraulic fluid quantity	Approx. 15 l



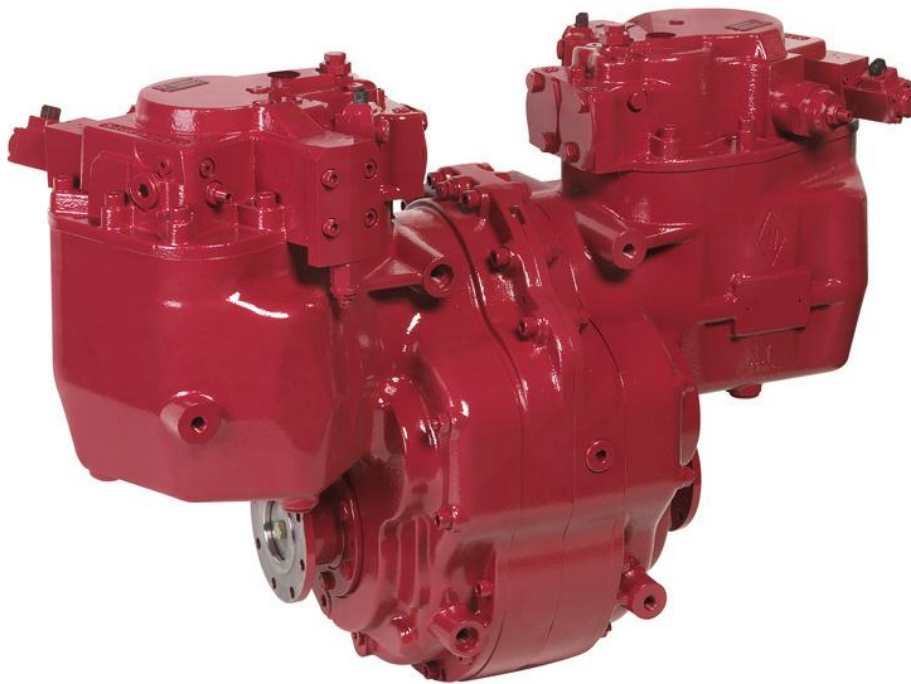
ICVD[®] GT-S2 A 233V



Transmission ratio i	1.7 - 2.2
Torque at the output shaft Md	4,080 - 5,280 Nm
Max. drive shaft operating angle ¹⁾	< 3° and Z-bend
Drive shaft flange both sides ¹⁾	DIN ISO 7646 120 x 8 x 10
Operating pressure – max. (Δp)	480 bar
Installation position	Vertical ¹⁾
Mass (without fluids) m	Approx. 185 kg
Transmission oil quantity	Approx. 6.5 l
Transmission oil grade	SAE 90 API-GL-5
Hydraulic fluid quantity	Approx. 1.5 l



ICVD® GT-T2 N 233V/233V



Transmission ratio i	1.7 - 2.2
Torque at the output shaft M_d	5,440 - 7,040 Nm
Max. drive shaft operating angle ¹⁾	$< 3^\circ$ and Z-bend
Drive shaft flange both sides ¹⁾	DIN ISO 7646 120 x 8 x 10
Operating pressure – max. (Δp)	480 bar
Installation position	Vertical ¹⁾
Mass (without fluids) m	Approx. 270 kg
Transmission oil quantity	Approx. 6.5 l
Transmission oil grade	SAE 90 API-GL-5
Hydraulic fluid quantity	Approx. 1.5 l per motor



ICVD®
the effective transmission

P
O
W
E
R

IV.

Max. output torque 7000 Nm



ICVD GT-T2N-233V/233V

III.

Max. output torque 5200 Nm



ICVD GT-S2A-233V/A

II.

Max. output torque 2600 Nm



ICVD GT-S1N-233V

I.

Max. output torque 1600 Nm



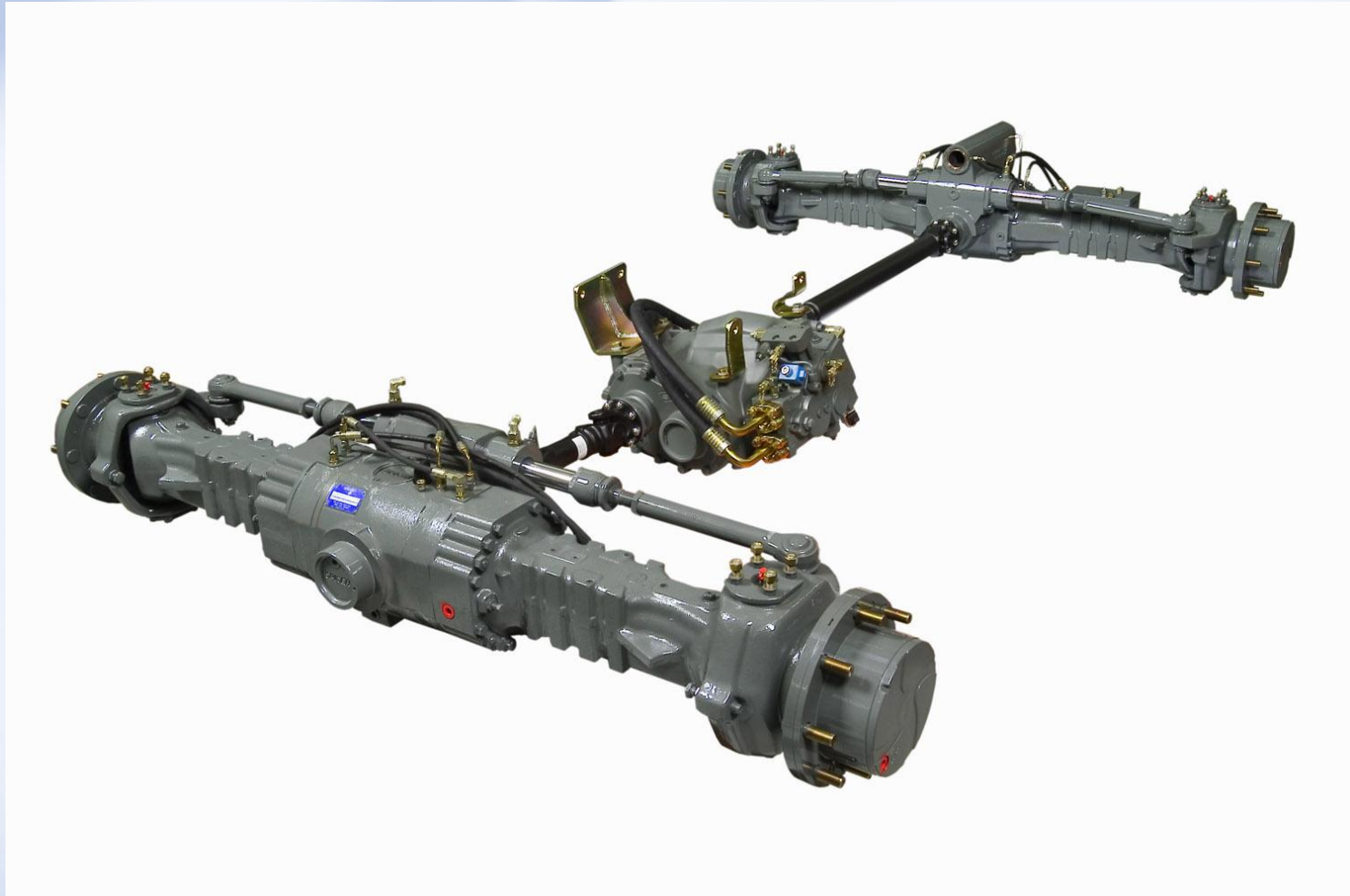
ICVD M0N-233V

**Produktionszahlen in 2010:
2500 Einheiten
Serienfertigung seit 2003**

Type

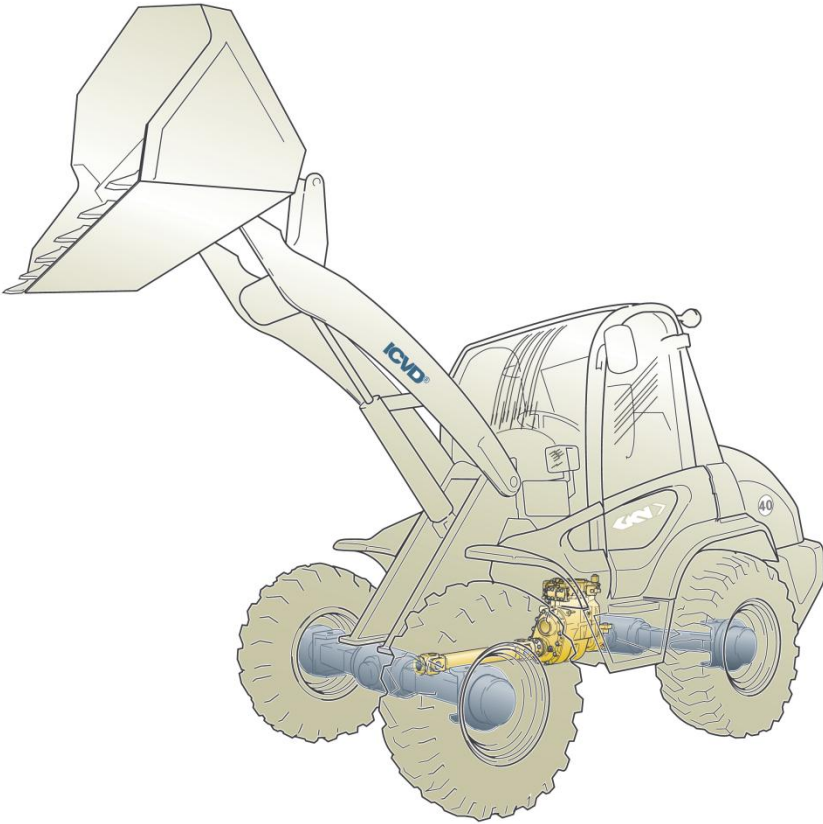


ICVD-Antriebsstrang Claas-Telehandler





kramerALLRAD®



seit 2003

BIBUS HYDRAULIK
SUPPORTING YOUR SUCCESS



RIGI  **TRAC**



seit 2004



ICVD®
the effective transmission



seit 2005



**Präsentation der neuen Telehandler-Serie mit
ICVD GT-S1N 233V**



kramerALLRAD®

CLAAS

SENEBOGEN®

LIEBHERR

macchine edili ed agricole
d DIECI





**Vielen Dank für Ihre
Aufmerksamkeit**



Our international sales network covers every jurisdiction. Our global shipping partners mean you can be sure we're on hand whenever you need us.

Zeus Hydratech Ltd

Unit 35
Old Mills Industrial Estate
Paulton
Bristol, BS39 7SU
United Kingdom

T. +44 (0) 1172 130042
E: info@zeushydratech.com
W. www.zeushydratech.com