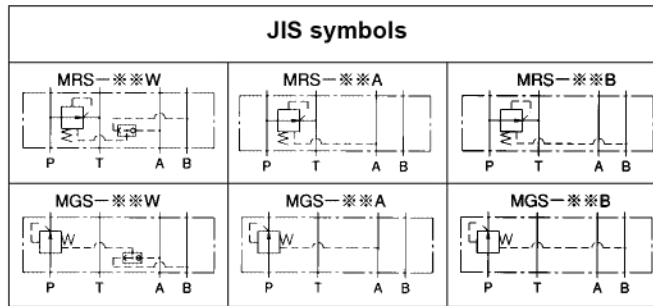


Stack type pressure compensation valve (KSP use)



Features

- The combination with KPS vane enables it to carry out a proportional flow control with pressure compensation.

Specifications

Model code	Nom. Dia.	Max. operating pressure MPa {kgf/cm ² }	Max. flow rate L/min	Weight kg		
				①	②	
MRS-02W-**-70	1/4	35 {350}	35	1.8	2	
MRS-02A (B)-**-70				1.6	1.8	
MGS-02W-**-70				1.8	2	
MGS-02A (B)-**-70				1.6	1.8	
MGS-03W-**-70	3/8		35 {350}	68	4	4.4
MGS-03A (B)-**-70					3.9	4.3

- Note) Weight
- ① Differential pressure mark 05
 - ② Differential pressure mark 10, 15